



MPI Privilege[®] System

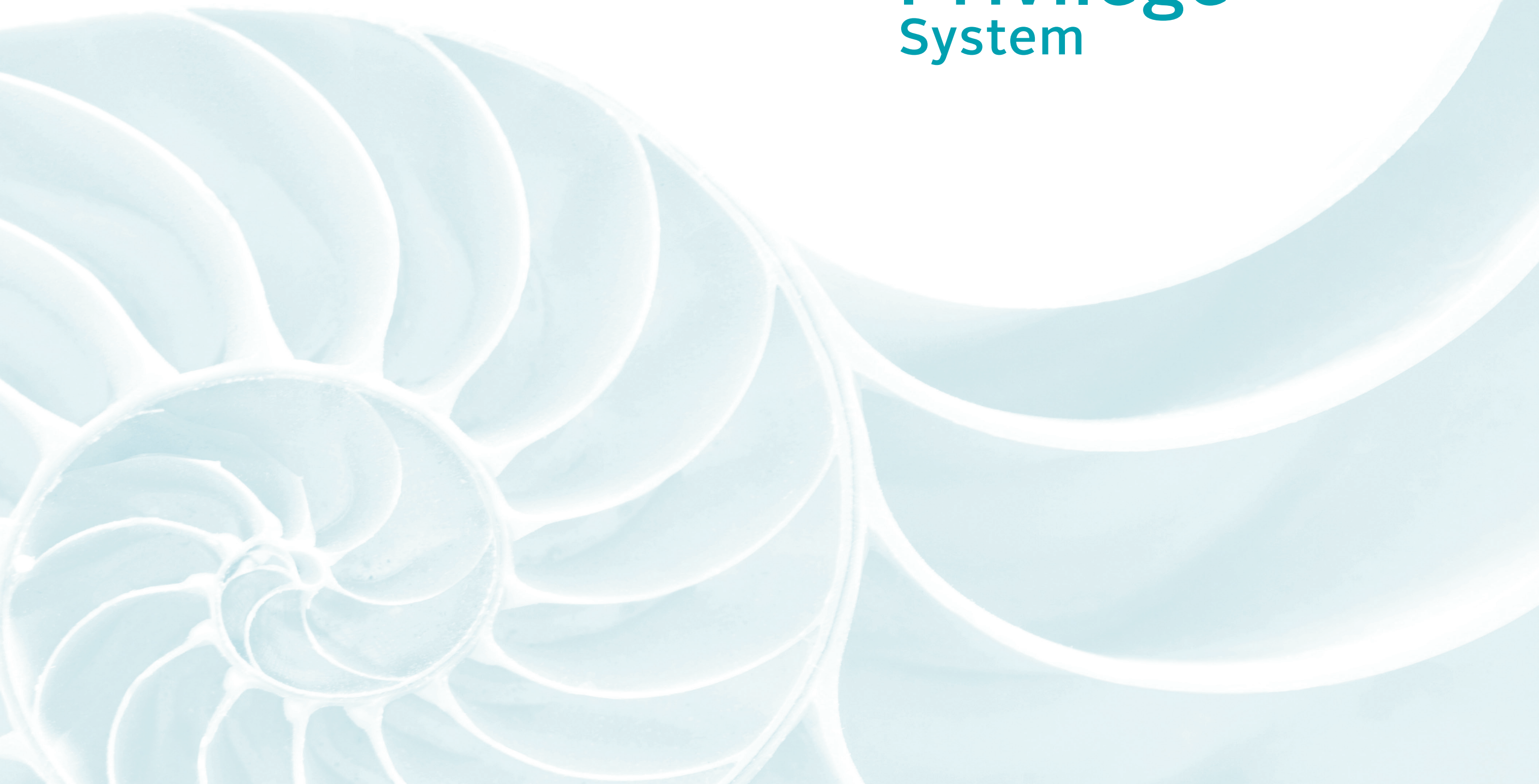
Internal Connection CM
External Connection HE



MPI Privilege® Systems	4
Advantages	6
Internal connection conical seal	8
- Prosthetic components CM	12
- Prosthetic components for digital solutions CM	24
External connection universal hexagon	26
- Prosthetic components IPHE	30
- Prosthetic components for digital solutions HE	44
Screws for abutments and impression copings	46
Surgical material	48
- Dental cases	50
- Surgical drills	53
- Screwdrivers and surgical instruments	54
General information	58
- Packaging opening instructions	59
- International implantable product card	60
- Label symbology	61
- Recommended implant placement	62
- Quality and general conditions of sale	63



MPI Privilege[®] System



Advantages MPI Privilege®

The state-of-the-art MPI Privilege® implants grant the highest safety levels, offering very high stability coefficients and boosting simplicity for any clinical case.

Thread Design

The double entrance of the threads, their optimal distance, as well as the microgroove, permit a controlled and continued insertion of the implant in any type of osseous quality.

Anatomic Design

The conical morphology of the apical part allows an atraumatic insertion of the MPI Privilege® implants.

The design is ideal for unitarian toothless gaps between teeth with apical convergences.

The initial stability is achieved through an osteotome effect in undersized implant beds.

The four cutting sides favour the auto-insertion and condense the bone obtaining an excellent initial stability.

EXTERNAL CONNECTION
UNIVERSAL
HEXAGON

INTERNAL CONNECTION
CONICAL
SEAL

Leeway to Maneuver and React

In order to be able to react and stop bacterial colonisations in early stages, the coronal neck has no surface treatment. Decontamination processes are more effective and faster, while granting minimum bone loss.

Surface Treatment Integratec®

The micro-structure of the surface acts in favour of the adhesion of the osteoblasts, responsible for the formation of the bone. As a consequence, the acceptance of the treated surface is speeded up and therefore the osteointegration of the implant.

High Performance Titanium

The structure of the implant gets reinforced by the use of Titanium Grade IV cold drawn bars of German origin.

The quality requirements established by MPI increase the resistance of the material by 20% regarding conventional Titanium Grade IV (min. 875 MPa).

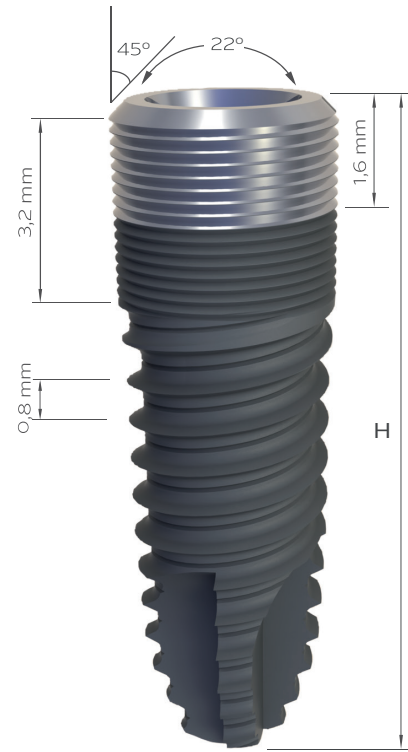
MPI
Privilege[®]
System

Internal Connection

Conical Seal

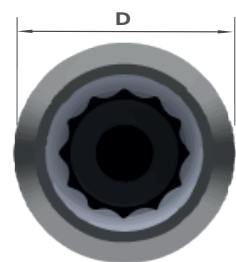
The double internal hexagon allows a fast and adjusted insertion of the prosthetic components, achieving a completely hermetic mechanical closing and tightness. The mono-block behaviour prevents bacterial filtrations and strengthens the design avoiding the physical fatigue as they work as a set.

Internal Connection Conical Seal



Product features

- Straight body with conical apex.
- Superficial treatment Integratec®.
- High osteotome effect.
- Recommended with infra-drilled implant bed.
- Reinforced implant structure by the use of Titanium Grade IV cold drawn bars.
- Cover screw included in the implant package.
- Coronal part with microgrooves.
- Optimum distribution of the functional loads.
- Double internal hexagon.
- Indicated for all types of bone densities.
- Insertion revolution: 30 rpm.
- Maximum torque recommended: 80 Ncm.



		D - Diameter (mm)		
		Ø 3,5	Ø 4	Ø 5
H - Length (mm)	IPCM			
	7	-	IPCM47	-
	8,5	IPCM38	IPCM48	-
	10	IPCM310	IPCM410	IPCM510
	11,5	IPCM311	IPCM411	IPCM511
	13	IPCM313	IPCM413	IPCM513
	15	IPCM315	IPCM415	IPCM515
		M 1,6		M 2,0



Cover Screw

- Made of Titanium Grade V with anodizing treatment.
- To use with screwdriver hexagonal manual Ø 1,2 mm (SDHM 121 / SDHM 122).
- Maximum torque recommended: 10 Ncm.

0 mm	Ø 3,5 / Ø 4	Ø 5
		CM594

Drilling Sequence IPCM

	Implant diameter (mm)		
	Ø 3,5	Ø 4	Ø 5
Lance Drill	● ● ● ●	● ● ● ●	● ● ● ●
Straight Drill Ø 2,0 mm	● ● ● ●	● ● ● ●	● ● ● ●
Straight Drill Ø 2,75 mm	● ● ● ●	● ● ● ●	● ● ● ●
Straight Drill Ø 3 mm	● ●	● ● ●	● ● ● ●
Step Drill Ø 3,25 / Ø 3,60 mm		● ●	● ● ●
Step Drill Ø 4,25 / Ø 4,60 mm			● ●
Tap	●	●	●





Healing Abutment Straight

- Made of Titanium Grade V.
- Maximum torque recommended 10 N-cm.
- To use with screwdriver 1,2 mm (SDHM121 / SDHM122).

	Ø 3,5 / Ø 4	Ø 5
2 mm	CM501	CM505
3 mm	CM502	CM506
4 mm	CM503	CM507
6 mm	CM504	CM508



Temporary Abutment

- Made of PEEK.
- Recommended: hexagonal abutment for single restorations and cylindrical abutment for multiple restorations.
- Use for temporary restorations.
- Definitive screw not included, CM535 (Ø 3,5 / Ø 4) or CM536 (Ø 5).
- Maximum torque recommended 10 N-cm.

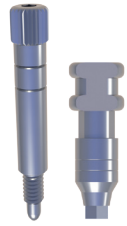
	Ø 3,5 / Ø 4	Ø 5
Hexagonal	CM523	CM524
Cylindrical	CM525	CM526



Healing Abutment Aesthetic

- Made of Titanium Grade V.
- Maximum torque recommended 10 N-cm.
- To use with screwdriver 1,2 mm (SDHM121 / SDHM122).

	Ø 3,5 / Ø 4		Ø 5
	Ø 4 - Ø 5	Ø 4 - Ø 6	Ø 5 - Ø 6
2 mm	CM509	CM513	CM517
3 mm	CM510	CM514	CM518
4 mm	CM511	CM515	CM519
6 mm	CM512	CM516	CM520



Impression Coping Open Tray

- Made of stainless steel.
- Maximum torque recommended 10 N-cm.
- To use with screwdriver 1,2 mm (SDHM121 / SDHM122).

	Ø 3,5 / Ø 4	Ø 5
Straight	CM541	CM542
	Ø 3,5 / Ø 4 - Ø 5	Ø 5 - Ø 6
Aesthetic	CM543	CM544



Impression Coping Closed Tray

- Made of stainless steel.
- Maximum torque recommended 10 N-cm.
- Only use with closed tray.
- Cylindrical, for use in multiple restorations.

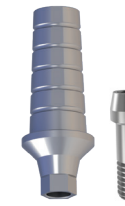
	Ø 3,5 / Ø 4	Ø 5
Straight	CM545	CM546
	Ø 3,5 / Ø 4 - Ø 5	Ø 5 - Ø 6
Aesthetic	CM547	CM548



Implant Analog

- Made of stainless steel.

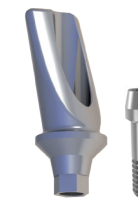
Ø 3,5 / Ø 4	Ø 5
CM549	CM550



Straight Abutment

- Made of Titanium Grade V.
- For direct implant restorations.
- For cement-retained prosthesis.
- Recommended: the gum height should be superior than the shoulder of the abutment.
- Served with the abutment screw CM535 (Ø 3,5 / Ø 4) ó CM 536 (Ø 5).

	Ø 3,5 / Ø 4	Ø 5
1 mm	CM551	CM555
2 mm	CM552	CM556
3 mm	CM553	CM557
4 mm	CM554	CM558



Angled Abutment

- Made of Titanium Grade V.
- For direct implant restorations.
- For cement-retained prostheses.
- Recommended: the gum height should be superior than the shoulder of the abutment.
- Served with the abutment screw CM535 (Ø 3,5 / Ø 4) ó CM 536 (Ø 5).

	Ø 3,5 / Ø 4	Ø 5
Angulation 15°	CM559	CM561
Angulation 25°	CM560	CM562

Cr-Co Base Castable Abutment



- For direct implant restorations.
- To use with screw-retained prostheses.
- Recommended hexagonal abutment for single restorations.
- All non-rotating castables are in black color for easily identify and the rotating ones in white color.
- Served with the abutment screw CM535 (Ø 3,5 / Ø 4) or CM536 (Ø 5).

	Ø 3,5 / Ø 4	Ø 5
Hexagonal	CM575	CM576
Cylindrical	CM577	CM578

Angled Castable



- Maximum torque recommended 20 N-cm.
- To use with screw-retained prostheses.
- Served with the abutment screw CM535 (Ø 3.5 / Ø 4) or CM536 (Ø 5).

	Ø 3,5 / Ø 4	Ø 5
Hexagonal 17°	CM585	CM586
Hexagonal 30°	CM587	CM588
Cylindrical 17°	CM581	CM582
Cylindrical 30°	CM583	CM584

MPI Pack



- Composed of: Impression Coping, Implant Analog, Cr-Co Base Castable Abutment and Abutment Screw.

	Ø 3,5 / Ø 4	Ø 5
Hexagonal	MPI PACK CMS HEX.	MPI PACK CML HEX.
Cylindrical	MPI PACK CMS CIL.	MPI PACK CML CIL.

Transepithelial System

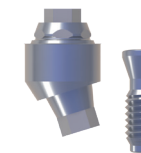
Transepithelial Straight Abutment



- Made of Titanium Grade V.
- Maximum torque recommended 30 N-cm.
- For use in multiple restorations.

	Ø 4
2 mm	CM565
3 mm	CM566
4 mm	CM567
5 mm	CM568

Transepithelial Angled Abutment



- Made of Titanium Grade V.
- Maximum torque recommended 30 N-cm.
- For use in multiple restorations.
- Allows parallelism correction between implants.
- Indicated for implants Ø 4 mm.
- Served with the definitive screw TRO01.

	Angulation 17°	Angulation 30°
2,5 mm	CM569	-
3,5 mm	CM570	CM571
4,5 mm	-	CM572

Healing Cap



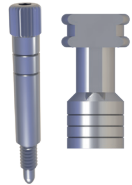
TR007

Hand Piece Connector



TR010

Transepithelial System



Impression Coping Open Tray

- Made of stainless steel.
- Maximum torque recommended 10 N-cm.
- To use with Screwdriver 1,2 mm (SDHM121 / SDHM122).

TR002



Impression Coping Closed Tray

- Made of stainless steel.
- Maximum torque recommended 10 N-cm.
- Indicated for multiple restorations.

TR003



Transepithelial Analog

- Made of stainless steel.

TR004



Temporary Abutment

- Made of PEEK.
- For multiple restorations.
- Definitive short screw M 1,4 not included (TRO08 / TRO09).

TR006



Straight Abutment

- Made of Titanium Grade V.
- For multiple restorations.
- Short screw M 1,4 not included (TRO08 / TRO09).

TR011



Castable Abutment

- To use with screw-retained prostheses.
- Indicated for multiple restorations.
- Definitive short screw M 1,4 not included (TRO08 / TRO09).

TR005

Cr-Co Base Castable Abutment



- For direct implant restorations.
- To use with screw-retained prostheses.
- All non-rotating castables are in black color for easily identify and the rotating ones in white color.
- Definitive short screw M 1,4 not included (TRO08 / TRO09)

Hexagonal	TR015A
Cylindrical	TR015

Short Screw M 1,4



- Made of Titanium Grade V.
- Maximum torque recommended 10 N-cm.
- For transepithelial uniblock abutment, use the TRO09 screw.
- For transepithelial angled abutment, use the TRO08 screw.

2 mm	TRO08
3 mm	TRO09

Ti-Base



- Manufactured in Titanium Grade V and Titanium Nitride (TiN) coating.
- Definitive screw not included (TRO08 / TRO09).
- Allows angulation with dynamic screw up to 30°.

Hexagonal	TR013A
Cylindrical	TR013

Digital Analog



Hexagonal	TR012A
Cylindrical	TR012

Scanbody



TR014

Locator® System



Locator® Abutment

- Threaded directly to the implant.
- Indicated for overdentures.
- Tolerates implant divergences between 20° y 40°.
- Use with the Locator® Core Tool (LO8393).

	Ø 3,5 / Ø 4	Ø 5
1 mm	LO8115	LO8686
2 mm	LO8116	LO8687
3 mm	LO8117	LO8688
4 mm	LO8118	LO8689
5 mm	LO8119	LO8690

Retention Replacement Male



White (2,27 Kgf)	LO8524
Pink (1,36 Kgf)	LO8527
Blue (0,68 Kgf)	LO8529
Green (1,36 - 1,81 Kgf)	LO8547
Red (0 - 0,68 Kgf)	LO8548

Locator® Core Tool



LO8393

Locator® bar attachment system



Impression Coping

LO8505



Analog

LO8530



Standard Range Male Processing Package

Allows divergences up to 20°.

LO8519



Extended Range Male Processing Package

Allows divergences up to 40°.

LO8540

Drill & Tap



Bar Abutment Thread (pack 2 units)	LO8589
Castable Threaded Insert (pack 10 units)	LO8014
Bar Male Processing Package (pack 2 units)	LO8028

Cast to



Cast-to Abutment (pack 2 units)	LO8586
Bar Male Processing Package (pack 2 units)	LO8028

Locator® U.S. Patent Nos. 6,030,219 and 6,299,447.

Equator® System



Equator® Abutment

- Threaded directly to the implant.
- Indicated for overdentures.
- Tolerates implant divergences up to 50°.
- Use with Equator® Tools (EQ1001 / EQ1009).
- Standard range male processing package included in the Equator® abutment package.

Internal Connection Conical Seal

	Ø 3,5/ Ø 4	Ø 5
1 mm	EQCM341	-
2 mm	EQCM342	EQCM52
3 mm	EQCM343	EQCM53
4 mm	EQCM344	EQCM54
5 mm	EQCM345	EQCM55
6 mm	EQCM346	-
7 mm	EQCM347	-



Impression Coping

EQ1002



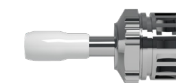
Analog

EQ1010

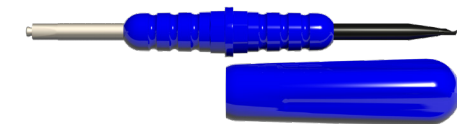
Retention Replacement Male

	Black	EQ1003
	Purple (2,7 kg)	EQ1005
	Pink (1,2 kg)	EQ1006
	Yellow (0,6 kg)	EQ1007
	White (1,8 kg)	EQ1008

Equator® Tools



EQ1001



EQ1009

CAD-CAM System



Ti-Base

- Made of Titanium Grade V with Titanium Nitride (TiN).
- Served with the abutment screw CM535 (Ø 3,5 / Ø 4) or CM536 (Ø 5).
- Allows angulation with dynamic screw up to 30°.

	Ø 3,5 / Ø 4	Ø 5
Hexagonal	CM600	CM601
Hexagonal 2 mm	CM600HG2	CM601HG2
Hexagonal 3 mm	CM600HG3	CM601HG3
Cylindrical	CM602	CM603
Cylindrical 2 mm	CM602HG2	CM603HG2
Cylindrical 3 mm	CM602HG3	CM603HG3



Dinamic Screw

- Made of Titanium Grade V.
- Maximum torque recommended 20 N.cm.
- Use with KD9142.

Ø 3,5 / Ø 4	Ø 5
CM579	CM580



Scanbody

- Made of Titanium Grade V.
- With surface treatment to avoid reflection.
- Abutment screw CM535 (Ø 3,5 / Ø 4) or CM536 (Ø 5). included.

	Ø 3,5 / Ø 4	Ø 5
Hexagonal	CM610	CM611



Digital Analog

- Made of stainless steel.

	Ø 3,5 / Ø 4	Ø 5
Hexagonal	CM612	CM613



Dynamic Screwdriver

- Use with dynamic screw (CM579 / CM580).

LENGHT	REFERENCE
20 mm	KD9142S
25 mm	KD9142M
30 mm	KD9142L



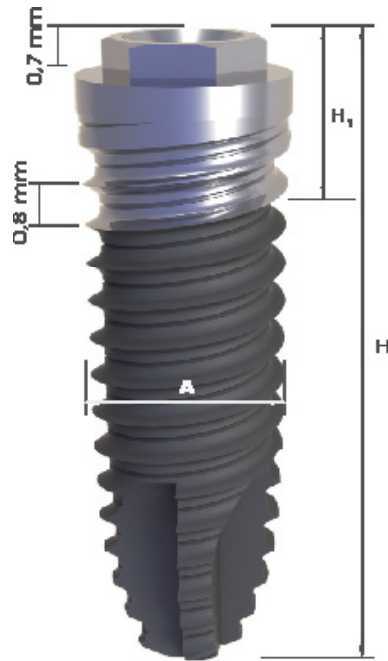
Download our libraries at www.mpimplants.com

MPI
Privilege®
System

External Connection

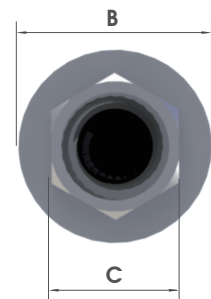
Universal Hexagon

External Connection Universal Hexagon

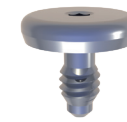


Product features

- Straight body with conical apex.
- Superficial treatment Integratec®.
- High osteotome effect.
- Recommended with infra-drilled implant bed.
- Reinforced hexagon by the use of Titanium Grade IV cold drawn bars.
- Cover screw included in the implant package.
- Indicated for all types of bone densities.
- Insertion revolution: 30 rpm.
- Maximum torque recommended: 80 N-cm.
- Same internal thread metric for all diameters (M2).



		A / B - Diameter (mm)				H ₁ - Length (mm)	H - Length (mm)
		IPHE	Ø 3,3 / Ø 3,5	Ø 3,3 / Ø 4,1	Ø 4 / Ø 4,1		
H - Length (mm)	7	-	-	IPHE47	IPHE57	2,2	
	8,5	-	-	IPHE48	IPHE58		
	10	IPHE310	IPHE3410	IPHE410	IPHE510	2,7	
	11,5	IPHE311	IPHE3411	IPHE411	IPHE511		
	13	IPHE313	IPHE3413	IPHE413	IPHE513		
	15	IPHE315	IPHE3415	IPHE415	IPHE515	3,2	
		2,5	2,7				
		C (mm)					



Cover Screw

- Made of Titanium Grade V with anodizing treatment.
- To use with screwdriver hexagonal manual Ø 1,0 mm (SDHM101 / SDHM102).
- Maximum torque recommended: 10 N-cm.

Ø 3,3 / Ø 3,5	Ø 3,3 / Ø 4,1	Ø 4 / Ø 4,1	Ø 5 / Ø 5,1
HE029	HE030	HE030	HE031

Drilling Sequence IPHE

	Implant diameter (mm)			
	Ø 3,3 / Ø 3,5	Ø 3,3 / Ø 4,1	Ø 4 / Ø 4,1	Ø 5 / Ø 5,1
Lance Drill	● ● ● ●	● ● ● ●	● ● ● ●	● ● ● ●
Straight Drill Ø 2,0 mm	● ● ● ●	● ● ● ●	● ● ● ●	● ● ● ●
Straight Drill Ø 2,75 mm	● ● ● ●	● ● ● ●	● ● ● ●	● ● ● ●
Countersink		*		
Step Drill Ø 3 mm	● ●	● ●	● ● ● ●	● ● ● ●
Step Drill Ø 3,25 / Ø 3,60 mm			● ●	● ● ● ●
Step Drill Ø 4,25 / Ø 4,60 mm				● ●
Tap	●	●	●	●

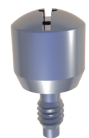
● BONE TYPE IV ● BONE TYPE III ● BONE TYPE II ● BONE TYPE I * OPTIONAL



Healing Abutment Straight

- Made of Titanium Grade V.
- Maximum torque recommended 10 N-cm.
- Use with screwdriver 1,2 mm (SDHM121 / SDHM122).

	Ø 3,3 / Ø 3,5	Ø 3,3 / Ø 4,1 - Ø 4 / Ø 4,1	Ø 5 / Ø 5,1
2 mm	HE001	HE005	HE009
3 mm	HE002	HE006	HE010
4 mm	HE003	HE007	HE011
6 mm	HE004	HE008	HE012



Healing Abutment Aesthetic

- Made of Titanium Grade V.
- Maximum torque recommended 10 N-cm.
- Use with screwdriver 1,2 mm (SDHM121 / SDHM122).

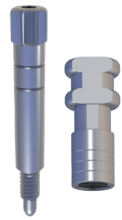
	Ø 3,3 / Ø 3,5	Ø 3,3 / Ø 4,1 - Ø 4 / Ø 4,1		Ø 5 / Ø 5,1
	Ø 4,1 - Ø 5	Ø 4,1 - Ø 5	Ø 4,1 - Ø 6	Ø 5 - Ø 6
2 mm	HE013	HE017	HE021	HE025
3 mm	HE014	HE018	HE022	HE026
4 mm	HE015	HE019	HE023	HE027
6 mm	HE016	HE020	HE024	HE028



Temporary Abutment

- Made of PEEK.
- Recommended: hexagonal abutment for single restorations and cylindrical abutment for multiple restorations.
- Use for temporary restorations.
- Abutment screw not included (HE050).

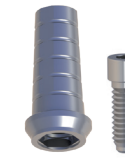
	Ø 3,3 / Ø 3,5	Ø 3,3 / Ø 4,1	Ø 4 / Ø 4,1	Ø 5 / Ø 5,1
Hexagonal	HE032	HE033	HE033	HE034
Cylindrical	HE035	HE036	HE036	HE037



Impression Coping Open Tray

- Made of stainless steel.
- Maximum torque recommended 10 N-cm.
- Use with screwdriver 1,2 mm (SDHM121 / SDHM122).
- Rotatory for Ø 4 (HE100) available.

	Ø 3,3 / Ø 3,5	Ø 3,3 / Ø 4,1	Ø 4 / Ø 4,1	Ø 5 / Ø 5,1
Straight	HE053	HE054	HE054	HE055
Aesthetic	HE056	HE057	HE057	HE058



Straight Abutment

- Made of Titanium Grade V.
- Maximum torque recommended 30 N-cm.
- For direct implant restorations.
- For cement-retained prostheses.
- Recommended that the gum height should be superior than the shoulder of the abutment.
- Served with the abutment screw (HE050).

	Ø 3,3 / Ø 3,5	Ø 3,3 / Ø 4,1 - Ø 4 / Ø 4,1	Ø 5 / Ø 5,1
1 mm	HE068	HE072	HE076
2 mm	HE069	HE073	HE077
3 mm	HE070	HE074	HE078
4 mm	HE071	HE075	HE079



Impression Coping Closed Tray

- Made of stainless steel.
- Maximum torque recommended 10 N-cm.
- For use in multiple restorations.

	Ø 3,3 / Ø 3,5	Ø 3,3 / Ø 4,1	Ø 4 / Ø 4,1	Ø 5 / Ø 5,1
Straight	HE059	HE060	HE060	HE061
Aesthetic	HE062	HE063	HE063	HE064



Angled Abutment

- Made of Titanium Grade V.
- Maximum torque recommended 30 N-cm.
- For direct implant restorations.
- For cement-retained prostheses.
- Recommended that the gum height should be superior than the shoulder of the abutment.
- Served with the abutment screw (HE050).

	Ø 3,3 / Ø 3,5	Ø 3,3 / Ø 4,1 - Ø 4 / Ø 4,1	Ø 5 / Ø 5,1
Angulation 17°	HE080	HE082	HE084
Angulation 25°	HE081	HE083	HE085



Implant Analog

- Made of stainless steel.

Ø 3,3 / Ø 3,5	Ø 3,3 / Ø 4,1 - Ø 4 / Ø 4,1	Ø 5 / Ø 5,1
HE065	HE066	HE067

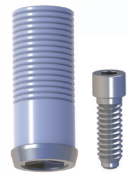
Castable Abutment



- For direct implant restorations.
- To use with screw-retained prostheses.
- Recommended hexagonal abutment for single restorations.
- All non-rotating castable abutments are in black color and the rotating castable abutments in white color.
- Abutment screw not included (HE050).

	Ø 3,3 / Ø 3,5	Ø 3,3 / Ø 4,1	Ø 4 / Ø 4,1	Ø 5 / Ø 5,1
Hexagonal	HE038	HE039	HE039	HE040
Cylindrical	HE041	HE042	HE042	HE043

Cr-Co Base Castable Abutment



- For direct implant restorations.
- To use with screw-retained prostheses.
- Recommended hexagonal abutment for single restorations.
- All non-rotating castable abutments are in black color and the rotating castable abutments in white color.
- Served with abutment screw (HE050).

	Ø 3,3 / Ø 3,5	Ø 3,3 / Ø 4,1	Ø 4 / Ø 4,1	Ø 5 / Ø 5,1
Hexagonal	HE044	HE045	HE045	HE046
Cylindrical	HE048	HE049	HE049	HE047

Angled Castable



- Maximum torque recommended 20 N-cm.
- To use with screw-retained prostheses.
- Served with dynamic screw (HE114).

	Ø 3,5 / Ø 4	Ø 3,3 / Ø 4,1 - Ø 4 / Ø 4,1
Hexagonal 17°	HE109	HE110
Hexagonal 30°	HE112	HE113
Cylindrical 17°	HE102	HE103
Cylindrical 30°	HE105	HE106

MPI Pack



- Composed of: Impression Coping, Implant Analog, Cr-Co Base Castable Abutment and Abutment Screw.

	Ø 3,3 / Ø 3,5	Ø 3,3 / Ø 4,1 Ø 4 / Ø 4,1	Ø 5 / Ø 5,1
Hexagonal	MPI PACK HES HEX.	MPI PACK HEM HEX.	MPI PACK HEL HEX.
Cylindrical	MPI PACK HES CIL.	MPI PACK HEM CIL.	MPI PACK HEL CIL.

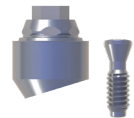
Transepithelial System



Transepithelial Straight Abutment

- Made of Titanium Grade V.
- Maximum torque recommended 30 N·cm.
- For use in multiple restorations.

	Ø 3,3 / Ø 4,1 - Ø 4 / Ø 4,1
2 mm	HE088
3 mm	HE089
4 mm	HE090
5 mm	HE091



Transepithelial Angled Abutment

- Made of Titanium Grade V.
- Maximum torque recommended 30 N·cm.
- For use in multiple restorations.
- Allows to correct disparelisms between implants.
- Indicated for Ø 3,3 / Ø 4,1 - Ø 4 / Ø 4,1 mm implants.
- Served with definitive screw (TROO1).

	Angulation 17°	Angulation 30°
2 mm	HE096	-
3 mm	HE097	HE098
4 mm	HE092	HE094
5 mm	-	HE095



Hand Piece Connector

TRO10



Healing Cap

TRO07



Impression Coping Open Tray

- Made of stainless steel.
- Maximum torque recommended 10 N·cm.
- Use with screwdriver 1,2 mm (SDHM121 / SDHM122).

TRO02



Impression Coping Closed Tray

- Made of stainless steel.
- Maximum torque recommended 10 N·cm.
- Indicated for multiple restorations.

TRO03



Transepithelial Analog

- Made of stainless steel.

TRO04

Transepithelial System



Temporary Abutment

- Made of PEEK.
- For multiple restorations.
- Short screw M 1,4 not included (TRO08 / TRO09).

TRO06



Straight Abutment

- Made of Titanium Grade V.
- For multiple restorations.
- Short screw M 1,4 not included (TRO08 / TRO09).

TR011



Castable Abutment

- Made of POM (Delrin Polliacetal).
- Use with screw-retained prostheses.
- Indicated for multiple restorations.
- Short screw M 1,4 not included (TRO08 / TRO09).

TRO05

Cr-Co Base Castable Abutment

- Use with screw-retained prostheses.
- Recommended hexagonal abutment for single restorations.
- All non-rotating castables are in black color for easily identify and the rotating ones in white color.
- Definitive short screw M 1,4 not included (TRO08 / TRO09)



Hexagonal

TR015A

Cylindrical

TR015

Short Screw M 1,4



- Made of Titanium Grade V.
- Maximum torque recommended 10 N-cm.
- For transepithelial uniblock abutment, use the TRO09 screw.
- For transepithelial angled abutment, use the TRO08 screw.

2 mm

TRO08

3 mm

TRO09

Ti-Base



- Manufactured in Titanium Grade V and Titanium Nitride (TiN) coating.
- Short screw M 1,4 not included (TRO08 / TRO09).
- Allows angulation with dynamic screw up to 30°.

Hexagonal

TR013A

Cylindrical

TR013

Scanbody



TR014

Digital Transepithelial Analog



Hexagonal

TR012A

Cylindrical

TR012

Overdenture System



Locator® Abutment

- Threaded abutment Locator® directly to the implant.
- Indicated for overdentures.
- Tolerates implant divergences between 20° and 40°.
- Use with the Locator® Core Tool (LO8393).

	Ø 3,3 / Ø 3,5	Ø 3,3 / Ø 4,1 - Ø 4 / 4,1*
0,73 mm	-	LO8681
1 mm	HE120	-
2 mm	-	LO8682
3 mm	HE122	LO8683
4 mm	-	LO8684
5 mm	HE124	LO8685
6 mm	-	LO8696

Retention Replacement Male



White (2,27 Kgf)	LO8524
Pink (1,36 Kgf)	LO8527
Blue (0,68 Kgf)	LO8529
Green (1,36 - 1,81 Kgf)	LO8547
Red (0 - 0,68 Kgf)	LO8548

Locator® Core Tool



LO8393

Locator® Bar Attachment System



Impression Coping

LO8505



Analog

LO8530

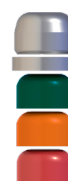
Standard Range Male Processing Package



Allows divergences up to 20°.

LO8519

Extended Range Male Processing Package



Allows divergences up to 40°.

LO8540



Drill & Tap



Bar Abutment Thread (pack 2 units)	LO8589
Castable Threaded Insert (pack 10 units)	LO8014
Bar Male Processing Package (pack 2 units)	LO8028

Cast to



Cast-to Abutment (pack 2 units)	LO8586
Bar Male Processing Package (pack 2 units)	LO8028

Locator® U.S. Patent Nos. 6,030,219 and 6,299,447.

Equator® System



Equator® Abutment

- Threaded abutment directly to the implant.
- Indicated for overdentures.
- Tolerates an implant divergence up to 50°.
- Use with Equator® tools (EQ1001 / EQ1009).
- Standard range male processing package included in the Equator® abutment package.

External Connection Universal Hexagon

	Ø 3,3/ Ø 4,1 - Ø 4 / 4,1
2 mm	EQHE42
3 mm	EQHE43
4 mm	EQHE44
5 mm	EQHE45
6 mm	EQHE46
7 mm	EQHE47



Impression Coping

EQ1002



Analog

EQ1010

Retention Replacement Male

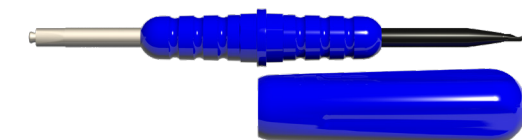


Black	EQ1003
Purple (2,7 kg)	EQ1005
Pink (1,2 kg)	EQ1006
Yellow (0,6 kg)	EQ1007
White (1,8 kg)	EQ1008

Equator® Tools



EQ1001



EQ1009

CAD-CAM System



Ti-Base

- Made of Titanium Grade V with Titanium Nitride (TiN).
- Abutment screw included HE050.
- Allows angulation with dynamic screw up to 30°.

	Ø 3,3 / Ø 3,5	Ø 3,3 / Ø 4,1 Ø 4 / Ø 4,1	Ø 5 / Ø 5,1
Hexagonal	HE200	HE201	HE202
Cylindrical	HE203	HE204	HE205



Dynamic Screw

- Maximum torque recommended 20 N·cm.
- Use with angled screwdriver KD9142.

Ø 4 / 4,1	HE114



Dynamic Screwdriver

- Use with dynamic screw (HE114).

20 mm	KD9142S
25 mm	KD9142M
30 mm	KD9142L



Scanbody

- Made of Titanium Grade V.
- With surface treatment to avoid reflection.
- Abutment screw HE050 included.

	Ø 3,3 / Ø 3,5	Ø 3,3 / Ø 4,1 Ø 4 / Ø 4,1	Ø 5 / Ø 5,1
Hexagonal	HE210	HE211	HE212



Digital Analog

- Made of stainless steel.

	Ø 3,3 / Ø 3,5	Ø 3,3 / Ø 4,1 Ø 4 / Ø 4,1	Ø 5 / Ø 5,1
Hexagonal	HE214	HE215	HE216

exocad

3shape

Download our libraries at
www.mpimplants.com

Screws for abutments and impression copings

Conical Seal

Definition	Reference	Implant Diameter	Recommended Torque
Abutment screw hex. 1,2 mm	CM535	Ø 3,5 / Ø 4 mm	30 N·cm
	CM536	Ø 5 mm	30 N·cm
Abutment screw hex. 1,2 mm with DLC treatment	CM535 DLC	Ø 3,5 / Ø 4 mm	30 N·cm
	CM536 DLC	Ø 5 mm	30 N·cm
Laboratory screw	CM537	Ø 3,5 / Ø 4 mm	20 N·cm
	CM538	Ø 5 mm	20 N·cm
Definitive gold screw	CM539	Ø 3,5 / Ø 4 mm	30 N·cm
	CM540	Ø 5 mm	30 N·cm
Dynamic screw	CM579	Ø 3,5 / Ø 4 mm	20 N·cm
	CM580	Ø 5 mm	20 N·cm

Universal Hexagon

Definition	Reference	Implant Diameter	Recommended Torque
Abutment screw hex. 1,2 mm	HE050	Ø 3,3 - Ø 3,5 mm	30 N·cm
		Ø 3,3 / Ø 4,1 - Ø 4 / Ø 4,1 mm	
		Ø 5 / Ø 5,1 mm	
Abutment screw hex. 1,2 mm with DLC treatment	HE050 DLC	Ø 3,3 - Ø 3,5 mm	30 N·cm
		Ø 3,3 / Ø 4,1 - Ø 4 / Ø 4,1 mm	
		Ø 5 / Ø 5,1 mm	
Laboratory screw	HE051	Ø 3,3 - Ø 3,5 mm	30 N·cm
		Ø 3,3 / Ø 4,1 - Ø 4 / Ø 4,1 mm	
		Ø 5 / Ø 5,1 mm	
Definitive gold screw	HE052	Ø 3,3 - Ø 3,5 mm	30 N·cm
		Ø 3,3 / Ø 4,1 - Ø 4 / Ø 4,1 mm	
		Ø 5 / Ø 5,1 mm	
Impression coping screw short	HE087S	Ø 3,3 - Ø 3,5 mm	10 N·cm
		Ø 3,3 / Ø 4,1 - Ø 4 / Ø 4,1 mm	
		Ø 5 / Ø 5,1 mm	
Dynamic screw	HE114	Ø 3,3 - Ø 3,5 mm	20 N·cm
		Ø 3,3 / Ø 4,1 - Ø 4 / Ø 4,1 mm	
		Ø 5 / Ø 5,1 mm	

Transepithelial System

Definition	Reference	Implant Diameter	Recommended Torque
Definitive screw CM transepithelial	TR001 CM	Ø 3,5 / Ø 4 mm	30 N·cm
		Ø 5 mm	
Definitive screw HE transepithelial	TR001 HE	Ø 3,3 / Ø 4,1 - Ø 4 / Ø 4,1 mm	30 N·cm
Short screw M 1.4 for angled transepithelials (2 mm)	TR008	-	10 N·cm
Short screw M 1.4 for angled transepithelials (3 mm)	TR009	-	10 N·cm

Surgical Material



Dental Case Combined

MPI Privilege®, MPI Excellence®, MPI All-In®



Reference	Description
DC68	Dental Case Combined
IDCC68	Insert Dental Case Combined

Content of Dental Case		
Dental case	Hand piece connector	Tap conical Ø 5 mm
Lance drill	Ratchet extensor long	Conical directional indicators
Drill extensor	Ratchet extensor short	Hand piece connector conical Ø 3,5 / Ø 4 mm
Initial drill Ø 2x15 mm	Conical drill Ø 3,5 mm	Hand piece connector conical Ø 5 mm
Drill Ø 2,75 mm	Conical drill Ø 3,75 mm	Ratchet extensor Ø 3,5 / Ø 4 mm
Drill Ø 3 mm	Conical drill Ø 4,3 mm	Ratchet extensor Ø 5 mm
Step drill Ø 3,25 / Ø 3,60 mm	Conical drill Ø 5 mm	Screwdriver hexagonal manual 1,0 mm
Step drill Ø 4,25 / Ø 4,60 mm	Pilot drill conical Ø 3,5 mm	Screwdriver hexagonal manual 1,2 mm
Countersink	Pilot drill conical Ø 3,75 mm	Motor screwdriver hexagonal 1,2 mm short
Pilot drill	Pilot drill conical Ø 4,3 mm	Motor screwdriver hexagonal 1,2 mm long
Tap Ø 3 mm	Pilot drill conical Ø 5 mm	Wrench standard
Tap Ø 4 mm	Tap conical Ø 3,5 mm	Open holding key
Tap Ø 5 mm	Tap conical Ø 3,75 mm	Implant depth gauge
Straight directional indicators	Tap conical Ø 4,3 mm	Insert IDCC68

MPI Privilege® Dental Case

Conical Seal y Universal Hexagon



Reference	Description
DC68	Dental Case Big
IDCP68	Insert Dental Case MPI Privilege® Big

Content of Dental Case			
Dental Case	Drill Ø 3 x 15 mm	Tap Ø 4 mm	Screwdriver hexagonal manual 1,2 mm short
Lance drill	Step drill Ø 3,25 / Ø 3,60 x 10 mm	Tap Ø 5 mm	Screwdriver hexagonal manual 1,2 mm long
Drill extensor	Step drill Ø 3,25 / Ø 3,60 x 15 mm	Straight directional indicators	Motor screwdriver hexagonal 1,2 mm short
Initial drill Ø 2 x 10 mm	Step drill Ø 4,25 / Ø 4,60 x 10 mm	Hand piece connector	Motor screwdriver hexagonal 1,2 mm long
Initial drill Ø 2 x 15 mm	Step drill Ø 4,25 / Ø 4,60 x 15 mm	Ratchet extensor long	Wrench standard
Drill Ø 2,75 x 10 mm	Countersink	Ratchet extensor short	Open holding key
Drill Ø 2,75 x 15 mm	Pilot drill	Screwdriver hexagonal manual 1,0 mm short	Implant depth gauge
Drill Ø 3 x 10 mm	Tap Ø 3 mm	Screwdriver hexagonal manual 1,0 mm long	Insert IDCP68

MPI Privilege® Dental Case

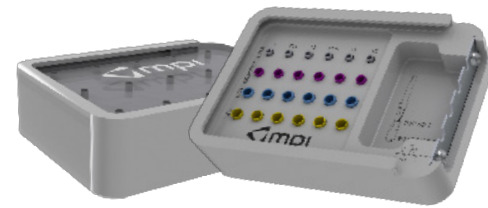
Reference	Description
DC36	Dental Case Small
IDCP36	Insert Dental Case MPI Privilege® Small



Content of Dental Case		
Lance drill	Hand piece connector	Wrench standard
Initial drill Ø 2 x 15 mm	Ratchet extensor	Open holding key
Drill Ø 2,75 x 15 mm	Drill extensor	Insert IDCP36
Drill Ø 3 x 15 mm	Step drill Ø 3,25 / Ø 3,60 x 15 mm	Step drill Ø 4,25 / Ø 4,60 x 15 mm
Motor screwdriver 1,2 mm long	Screwdriver hexagonal manual 1,0 mm long	Screwdriver hexagonal manual 1,2 mm long

Surgical Material

Reference	Description
STDC Case	Stoppers Drills Conical Case



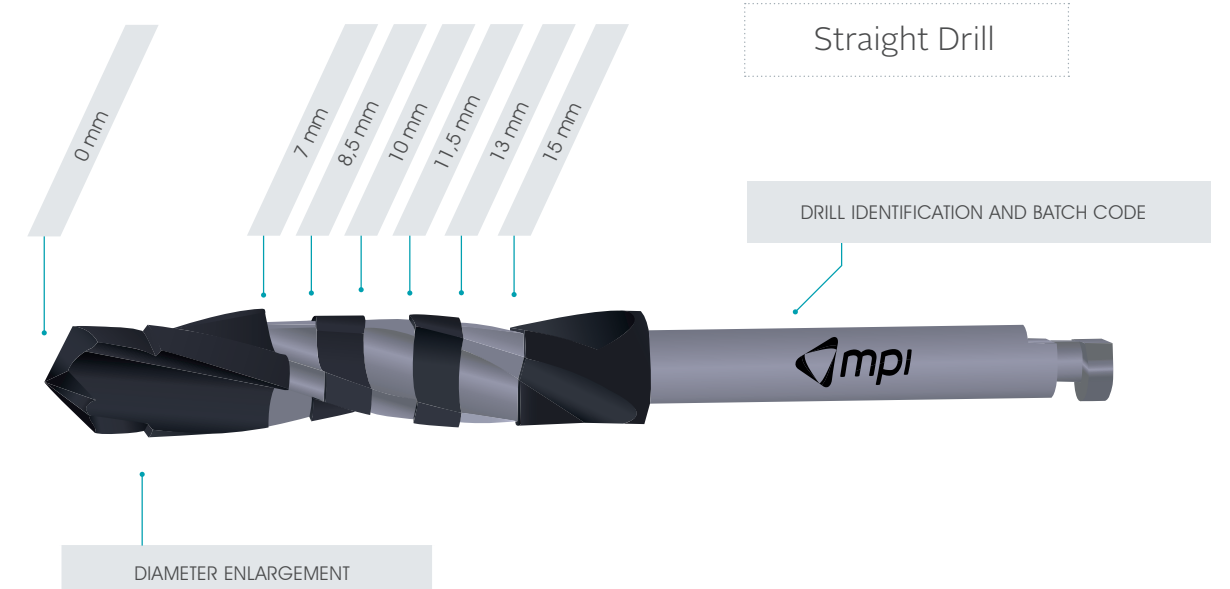
MPI Excellence® and MPI All-In® Dental Case Conical Drills

Reference	Description
DC001	Dental case conical drills
IDC001	Insert D.C conical drills

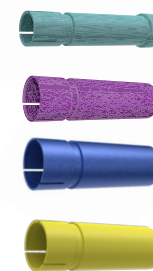


Content of Dental Case			
Dental case conical drills	Pilot drill conical Ø 3,5 mm	Direct. indicator conical Ø 3,5 mm	Screwdriver hexagonal manual 1,2 mm short
Lance drill DLC	Pilot drill conical Ø 3,75 mm	Direct. indicator conical Ø 3,75 mm	Screwdriver hexagonal manual 1,2 mm long
Drill extensor	Pilot drill conical Ø 4,3 mm	Direct. indicator conical Ø 4,3 mm	Motor screwdriver hexagonal 1,2 mm short
Drill DLC Ø 2x15 mm	Pilot drill conical Ø 5 mm	Direct. indicator conical Ø 5 mm	Motor screwdriver hexagonal 1,2 mm long
Conical drill Ø 3,5 mm	Tap Ø 3,5 mm	Hand piece connector conical Ø 3,5/4 mm	Wrench screwdriver hexagonal 1,2 mm short
Conical drill Ø 3,75 mm	Tap Ø 3,75 mm	Hand piece connector conical Ø 5 mm	Wrench screwdriver hexagonal 1,2 mm long
Conical drill Ø 4,3 mm	Tap Ø 4,3 mm	Ratchet connector conical Ø 3,5/4 mm	Torque wrench
Conical drill Ø 5 mm	Tap Ø 5 mm	Ratchet connector conical Ø 5 mm	Insert D.C conical drills

Surgical Drills



		TOPES DE FRESAS			
DIÁMETRO Ø	(mm) LONGITUD	Ø 2	Ø 3	Ø 4	Ø 5
7 mm		STDP27	STDC37	STDC47	STDC57
8,5 mm		STDP28	STDC38	STDC48	STDC58
10 mm		STDP210	STDC310	STDC410	STDC510
11,5 mm		STDP211	STDC311	STDC411	STDC511
13 mm		STDP213	STDC313	STDC413	STDC513
15 mm		STDP215	STDC315	STDC415	STDC515

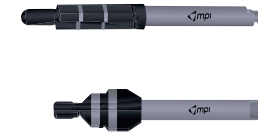




INITIAL DRILL	
DIAMETER	REFERENCE
Ø 1,9 mm	RD1910
-	LD3310 DLC
-	LD3317
Ø 2,0 mm	DPEC210
Ø 2,0 mm	DPEC215
Ø 2,0 mm	D215



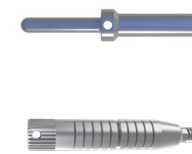
STRAIGHT DRILLS	
DIAMETER X LENGTH	REFERENCE
Ø 2,75 mm x 10 mm	DPEC2710
Ø 2,75 mm x 15 mm	DPEC2715
Ø 3,0 mm x 10 mm	DPEC310
Ø 3,0 mm x 15 mm	DPEC315
Ø 3,25 / 3,60 mm x 10 mm	DPEC32610
Ø 3,25 / 3,60 mm x 15 mm	DPEC32615
Ø 4,25 / 4,60 mm x 10 mm	DPEC42610
Ø 4,25 / 4,60 mm x 15 mm	DPEC42615



PILOT DRILLS / COUNTERSINK	
DIAMETER	REFERENCE
Ø 2,0 / 3,0 mm	PD2310
Ø 3,0 / 4,0 mm	PD3410
Ø 2,0 / 5,0 mm	CS24510



TAPS	
DIAMETER	REFERENCE
Ø 3,5 mm	TAP 3
Ø 4,1 mm	TAP 4
Ø 5,1 mm	TAP 5

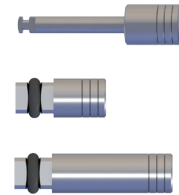


DIRECTIONAL INDICATOR	
Directional indicator Privilege®	DIIPHE
Gingival depth gauge Ø 3,5 / Ø 3,75 / Ø 4,3 mm	GDG 34
Gingival depth gauge Ø 5 mm	GDG 5

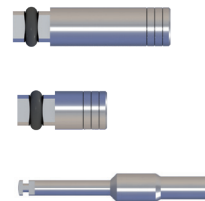
Surgical Material



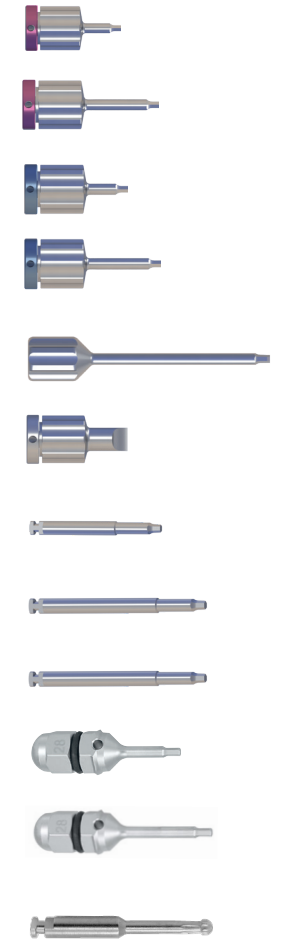
MOUNTS	
Mount long MPI Privilege® HE Ø 3,3 / 3,5 mm	MLIPHE3
Mount long MPI Privilege® HE Ø 3,3 / 4,1 - Ø 4 / 4,1 mm	MLIPHE4



HAND PIECE CONNECTORS	
Hand piece connector	H/P CONNECTOR
Hand piece connector manual short	H/P MANUAL S
Hand piece connector manual long	H/P MANUAL L



EXTENSORS	
Ratchet extensor long	EXT L
Ratchet extensor short	EXT S
Drill extensor	DEP010



SCREWDRIVERS		
Screwdriver hexagonal manual 1,0 mm short		SDHM101
Screwdriver hexagonal manual 1,0 mm long		SDHM102
Screwdriver hexagonal manual 1,2 mm short		SDHM121
Screwdriver hexagonal manual 1,2 mm long		SDHM122
Screwdriver laboratory 1,2 mm		SDLB
Screwdriver flat manual		SDFM010
Motor screwdriver hexagonal 1,2 mm short		MSD010
Motor screwdriver hexagonal 1,2 mm long		MSD020
Motor screwdriver hexagonal 1,0 mm long		MSD102
Screwdriver for wrench hexagonal 1,2 mm short		SDWR121
Screwdriver for wrench hexagonal 1,2 mm long		SDWR122
Angled system screwdriver	20 mm 25 mm 30 mm	KD9142S KD9142M KD9142L



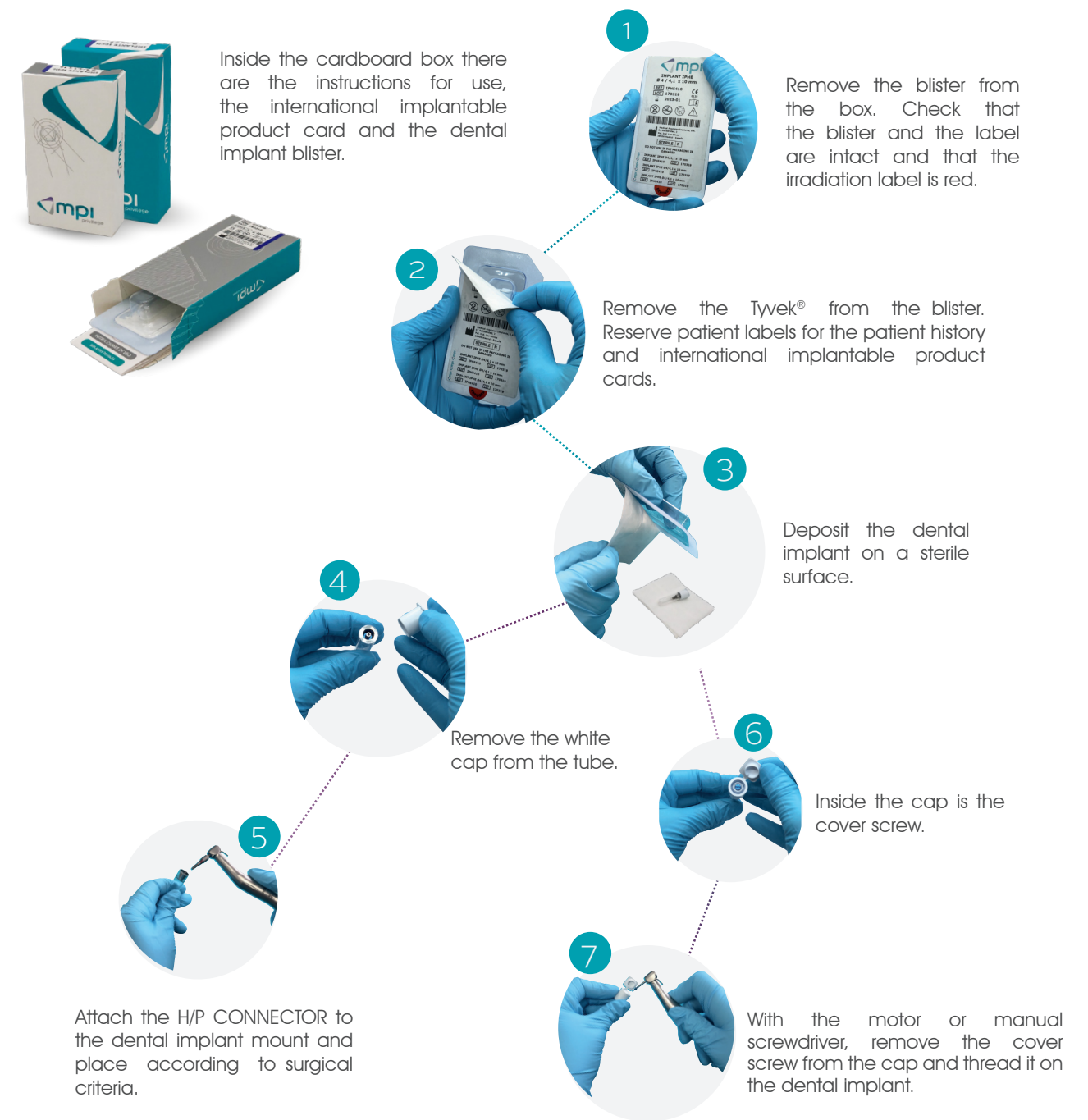
SURGICAL TOOLS		
Implants depth gauge		IDG 010
Open holding key		OHK 010
Wrench standard		WST 010-2
Torque wrench		WST 020
Bone cutting system	Ø 3,5 mm Ø 4 mm Ø 5 mm	BCS 3 BCS 4 BCS 5

General Information

Packaging Opening Instructions

Designed for easy identification of each implant. According to the color of the outer box, we can find:

- Green packaging: Dental implant MPI Privilege® CM
- White packaging: Dental implant MPI Privilege® HE



International Implantable Product Card

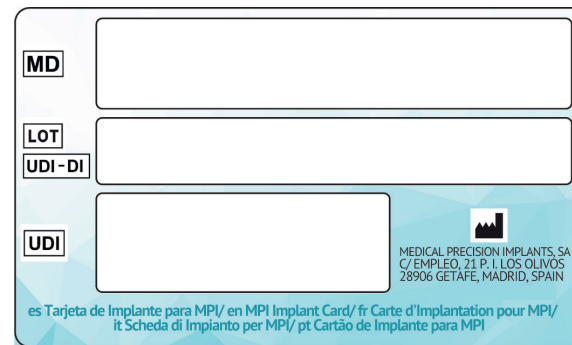
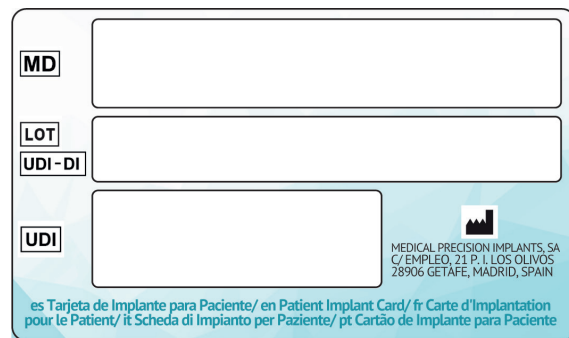
MPI will deliver with each of its implantable products, an international implantable product card.

This card contains the following pre-printed information:

- MD: Medical device to which the card belongs
- UDI: Unique product identifier.

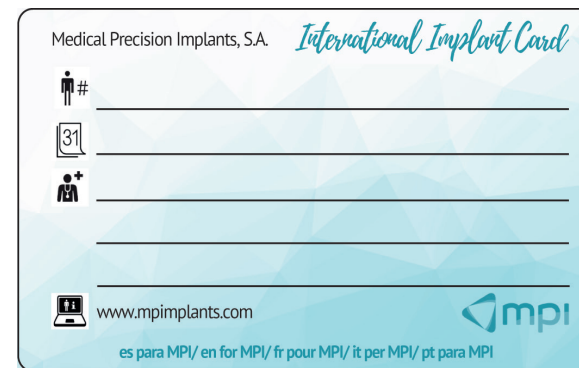
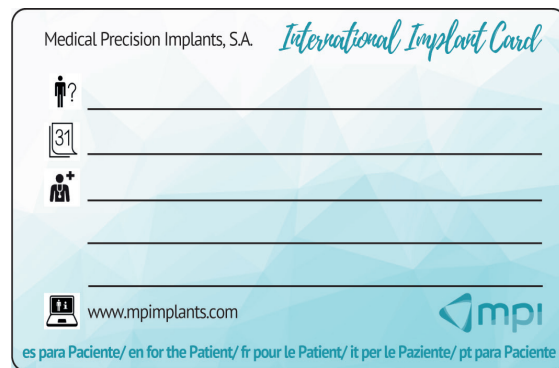
The user must stick a patient label (included on the product label) on each of the two boxes identified with:

- LOT / UDI-DI.



On the back of the card, the user must fill in the following information with the patient's information:

- Patient name (Patient ID)
- Record number (Patient number)
- Implementation date
- Name of the medical care center.

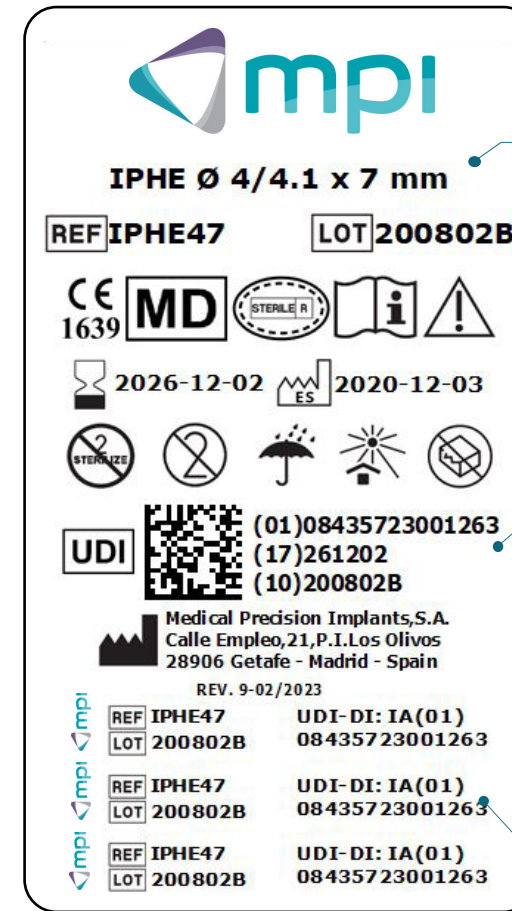


The international implantable product card marked with:

- "for the Patient", must be given to the patient and
- "for MPI", must be returned to MPI by the medical care center.

Label Symbolology

Label:



Dental implant description and measurements are indicated:

- IPCM: MPI Privilege® Internal Connection CM
- IPHE: MPI Privilege® External Connection HE

UDI - DataMatrix

(01) UDI-DI

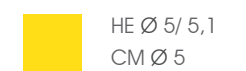
(17) Expiration date (YYMMDD)

(10) Batch number

Patient labels indicating reference, batch code and UDI-DI.

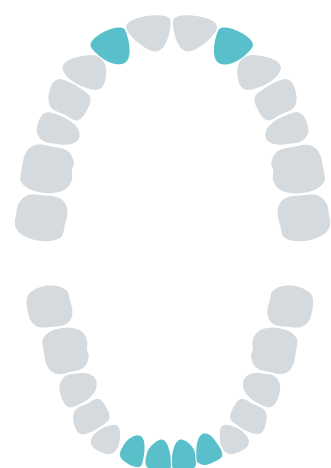
Symbology:

	Manufacturer.		Caution.
	Country of manufacture with the two-letter country code defined in the Standard ISO 3166-1. The date of manufacture can be added adjacent to the symbol.		UDI-DI Data matrix: (01) UDI-DI / (17) Expiration date (YYMMDD) / (10) Batch number.
	Batch code.		CE symbol with the notified body number 1639.
	Catalogue number.		Use by date.
	Keep away from sunlight.		Sterilized using irradiation. Single sterile barrier system with protective packaging inside.
	Do not re-use.		Unique Device Identification.
	Do not re-sterilize.		Medical Device.
	Keep dry.		Text language.
	Consult instructions for use.		Do not use if package is damaged and consult instructions for use.



Ø Body / platform (mm)

Recommended Implant Placement



Implant diameters: Narrow platform.

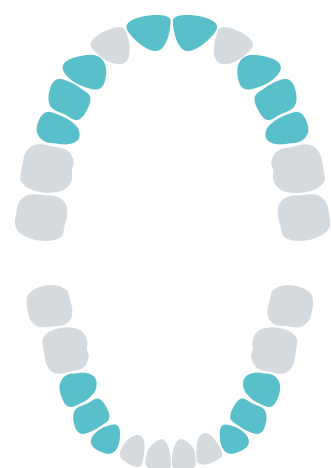
- MPI Privilege® HE Ø 3,3 / Ø 3,5 mm y HE Ø 3,3 / Ø 4,1 mm
- MPI Privilege® CM Ø 3,5 mm

Instructions for use:

For fixed, single and multiple-unit restorations.

Recommended position:

Lateral incisors in the upper jaw, lateral incisors and central incisors in the lower jaw. For edentulous patients with 4 implants supported overdenture in the anterior and mid areas.



Implant diameters: Regular platform.

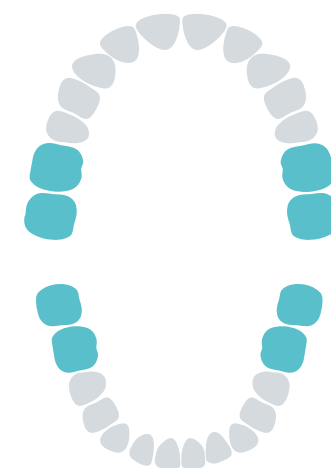
- MPI Privilege® HE Ø 4 / 4,1 mm
- MPI Privilege® CM Ø 4 mm

Instructions for use:

For fixed, single and multiple-unit restorations.

Recommended position:

Central incisors, canines and premolars in the upper jaw and canines and premolars in the lower jaw.



Implants diameters: Wide platform.

- MPI Privilege® HE Ø 5 / 5,1 mm
- MPI Privilege® CM Ø 5 mm

Instructions for use:

For fixed, single and multiple-unit restorations.

Recommended position:

Molars in both jaws.

Quality and General Conditions of Sale

Quality

To ensure the most demanding quality standards, we have equipped our metrology laboratory with qualified personnel and state-of-the-art measuring instruments. Thanks to demanding quality controls, we have achieved a success rate of over 99%. The "Zero defects" policy is our fundamental basis for the quality of our products and the satisfaction of our customers.

MPI is certified with:

- ISO13485:2016
- UNE166002:2021

Orders

Telephone: +34 91 684 60 63

E-mail: pedidos@mpimplants.com

Shipments and verification of the products

For orders over €150, the products will be sent free of charge.

Once the order is received, the user should check the order and products.

If there should be any deviation in the order, please contact us as soon as possible.

Return policy

The maximum return period is 15 days from the date of issuance of the delivery note. Changes will not be accepted once the material has been opened and used or its packaging is not in perfect condition.

Returns of unsuccessful materials will not be accepted after 2 months after the cause.

Payment methods

Direct debit / cash on delivery (additional cost).

Warranty

We guarantee the replacement of our products as long as they are combined with original MPI components.



For more information:
☎ +34 916 846 063
www.mpimplants.com